

# Addressing Social Determinants of Health



September 2021



# Advocate Aurora Health Slides

# Summary

- **Advocate Aurora Health** is one of the top 12 not-for-profit health systems in the country with 26 hospitals, 500+ sites of care, 75,000 team members serving over 3M unique patients in IL and WI
- Significant Board level commitment to Diversity, Equity, and Inclusion; health equity is a strategic priority guided by our executive level Health Equity Council (HEC) which commissions our SDoH Work team
- Our SDoH work team is focused on 1) full scope EHR integration of our NowPow/UniteUs CBO referral network, 2) scaling SDoH screening and referral, 3) growing “social care” capabilities, and 4) enabling priority population strategies
- Our collaborative goal is to reduce healthcare disparities by advancing industry-wide incorporation of social factors. By shared learning we hope to inform our internal strategies, gain analytics and operations insights, and learn about funding opportunities

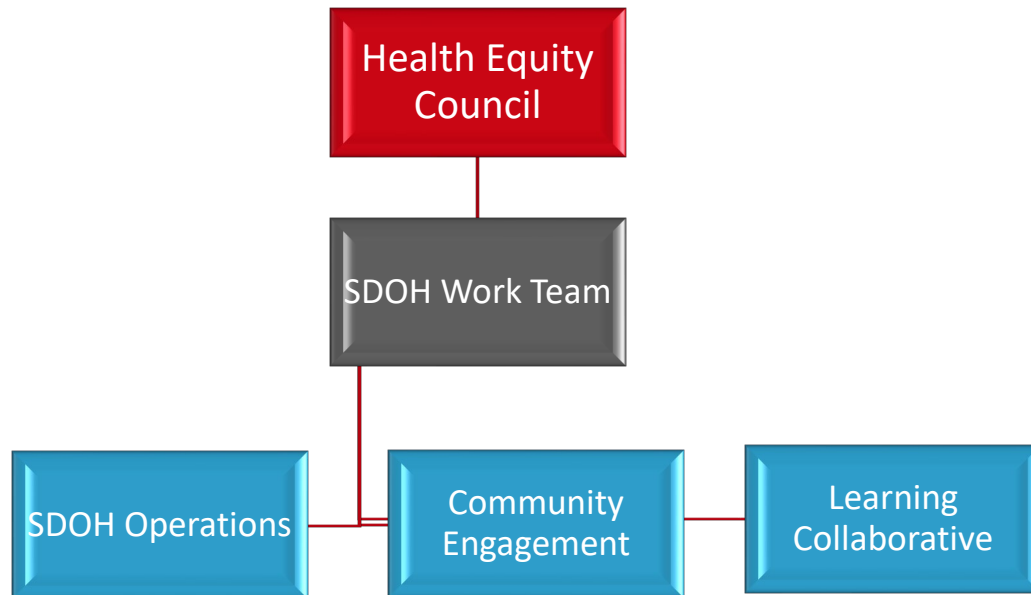
# Our Organization

---

- **Advocate Aurora Health** is one of the top 12 not-for-profit health systems in the country with 26 hospitals, 500+ sites of care, 75,000 team members and serves over 3M unique patients in Illinois and Wisconsin
- AAH has significant Board level commitment to Diversity, Equity, and Inclusion; health equity is a strategic priority commissioned and guided by our executive level Health Equity Council (HEC)
- Our three affiliated MSSP ACOs combined generated the highest savings of any integrated health system in the nation
- Our diversity, equity and inclusion strategy is anchored by our purpose to help people live well and is fueled by a commitment to transform our workplace and our communities



# Our Team



## SDOH Leadership: SDOH Work Team



Sharon Quinlan  
Sys VP, Nurse Quality &  
Practice



Jackie Rouse, DrPH  
VP, Community Health - IL



Megan Reyna  
Sys VP, PHO

SDOH Initiative - Commissioned by **Health Equity Council** (HEC) and driven by Clinical, Operational, and Community contributors

### SDOH Work Team

- **SDOH Operations** – Oversees SDOH testing and HIT capacity to develop optimal workflow and screening
- **Community Engagement** – Works with community-based organizations to provide support and address health disparities
- **Learning Collaborative** – Shares experiences and lessons learned in addressing SDOH across our system with a focus on health equity, diversity, and inclusion

### Capabilities

- Partnership with NowPow (now UniteUs) with universal clinician access to system-wide network of ~11,000 CBOs
- Early-stage population analytics

# Our ACOs Current Efforts to Address SDOH

---

In addition to building foundational operational workflows and HIT capability the Health Equity Council has defined priorities:

- Reduce hypertension in black and Latinx communities in defined zip codes and
- Measure and implement women's health safety standards to reduce maternal health outcome disparities
- Full EPIC integration of NowPow's CBO network to enable "mass personalization" of referrals and closed loop feedback



# Our Objectives for the Collaborative

---

Reduce healthcare disparities by advancing industry-wide incorporation of social factors in care

Share learnings to:

- Inform future initiative structure and resource requirements
- Gain insights re data analytics strategy
- Learn how others are incorporating social factors into clinical plans of care
- Identify funding opportunities

