

---

- Addressing Social Determinants of Health

---

## Participant Storyboard Template

September 2021



# Storyboard Summary

---

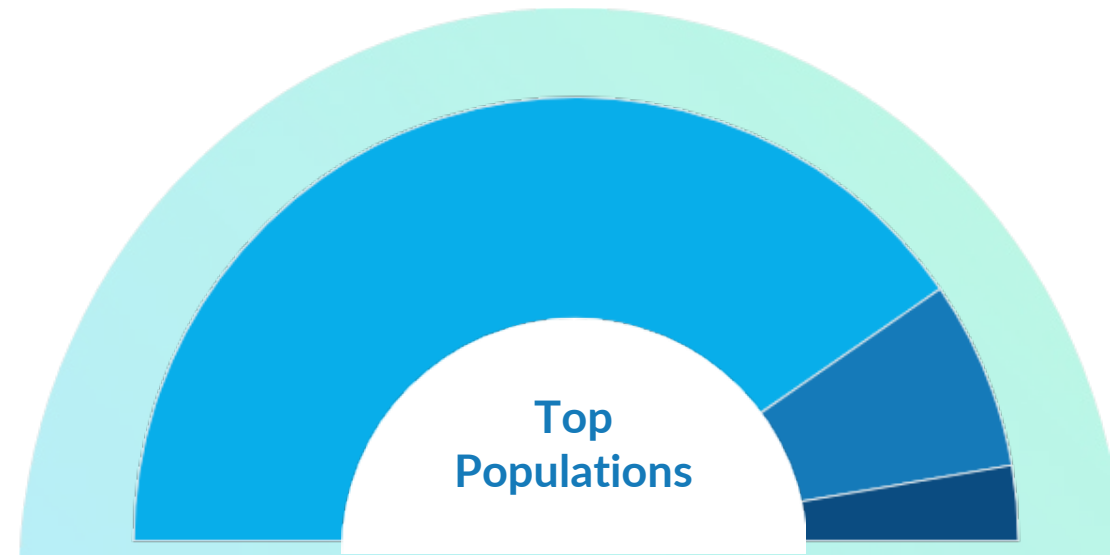
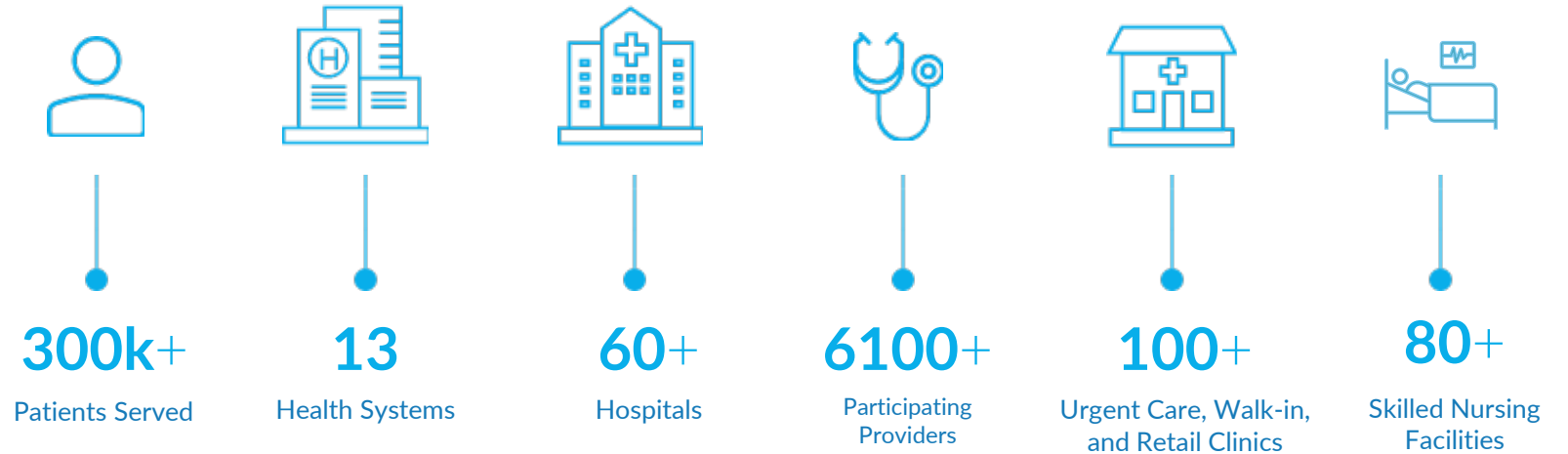
- Vanderbilt Affiliated Health Network (VAHN) is a clinically integrated network in Tennessee consisting of over 300,000 attributed lives and 6,000 clinicians.
- Six VHAN leaders with a breadth of professional experience, educational backgrounds and shared passion for bettering patient lives will participate in the Learning Collaborative.
- VHAN is currently in development of addressing patients with social determinates of health needs to increase cancer screenings rates.
- Our key objective for participating in this Learning Collaborative is to learn from our peers in ways to advance our approach to achieve cancer screenings goals and expand upon that work into additional patient care needs.

# Vanderbilt Health Affiliated Network (VHAN)

## Overview

The Vanderbilt Health Affiliated Network includes more than 6,200 clinicians, 70 hospitals, 13 health systems, and hundreds of physician practices and clinics working together to provide the best care, at the right time, and at the right cost.

VHAN manages 3 Medicare Shared Savings Program (MSSP) participating ACOs spanning across west, middle and east Tennessee markets.



# VHAN Team Participants in SDoH Learning Collaborative



**Pam Bruce, DNP, MSN, RN, CPPS**  
*Director of Quality & Clinical Transformation*  
pamela.bruce@vhan.com



**Matt Duckworth, JD, DHA, MS**  
*Manager of Network Operations*  
matt.duckworth@vhan.com



**Katie Herron, MS**  
*Director of Network Operations*  
katie.herron@vhan.com

**Lindsay B. Knight, MHA, CPHQ**  
*Sr. Project Manager*  
lindsay.b.knight@vumc.org

**Rachael Peters, MA**  
*Senior Analytics Consultant*  
rachael.p.peters@vumc.org



**Serena W. Pigue, MSW, LCSW, ACM-SW**  
*Sr. Clinical Quality & Transformation Advisor*  
serena.pigue@vhan.com

# Current Efforts to Address SDOH



- **Needs in your community that your team would like to address**

- We are in the research and planning phase of our SDOH work. We hope to learn more about the needs of our population as we begin our pilot program in calendar year 2022.

- **What populations will you will prioritize serving**

- The objective of this work is to use SDOH to inform decision making in clinical operations and better understand the “regionality” of our network and impact of SDOH on key quality outcome measures. Our Phase 1 approach will focus on members eligible for breast, cervical, and colorectal cancer screenings who live in areas of high socioeconomic disparity.

- **How do you collect information about the needs of your population**

- We are currently using SDOH data from the Tennessee Hospital Association, in particular the Socioeconomic Disparity Index (SDI), a composite score they created from American Community Survey data. We plan to utilize community needs assessments and other existing research in the future.

- **Who are important partners in your community**

- VUMCs Department of Health Equity
- VHAN practices and providers

# Your Objectives for the Collaborative



- **Learn from our peers**

- Best practices for developing, implementing, and evaluating an SDOH program
- Building community collaboration
- Potential challenges and how to overcome them