
- Addressing Social Determinants of Health

Participant Storyboard Template

September 2021



Team Slide/Life Health – Griffin and Value Care Alliance



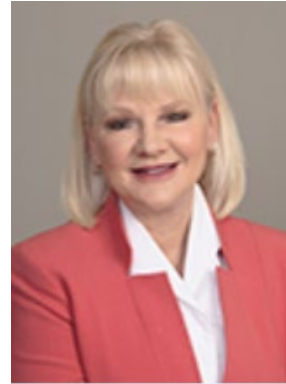
Todd Liu, Griffin Hospital
VP, Accountable Care
and General Counsel



Jeanne O'Brien, VCA
CEO



Monica Oris, Griffin
Director of Population Health



Georgia Ng, VCA
Director of Population Health



Tracy Raab, VCA
Project Manager



GRIFFIN HEALTH

Empowering People, Advancing Care

GRIFFINHEALTH.ORG

About Griffin Health

- Founded in 1909 Griffin has grown to encompass **Griffin Hospital**, an acute care hospital, and **Griffin Faculty Physicians**, a medical group practice, serving more than 130,000 residents of the Lower Naugatuck Valley Region in Connecticut.
- Recognized for having industry-leading patient satisfaction ratings
- Received numerous quality and clinical excellence awards:
 - Recognized as one of Newsweek's Best Hospitals in the World in 2019, 2020, and 2021
 - Only hospital to be named to FORTUNE Magazine's "100 Best Companies to Work For" list for ten consecutive years
 - Only Connecticut hospital recognized four times by the Joint Commission as a "Top Quality Performer" on key quality measures,
 - Planetree Gold Certified for excellence in patient centered care

Griffin Hospital

Highlights:

Founded 1909 in Derby, Connecticut

160-bed acute care not-for-profit community teaching hospital

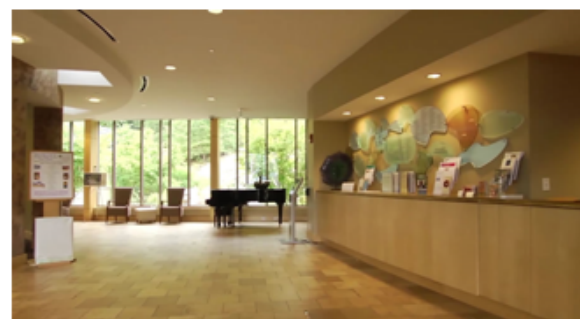
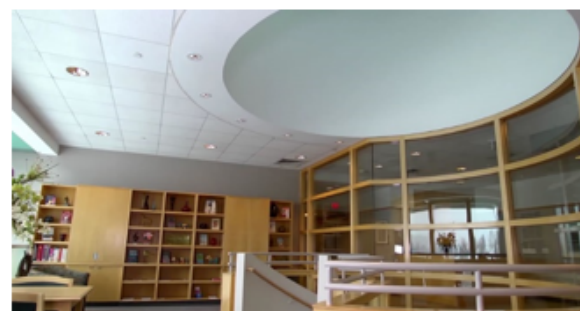
Flagship of the Planetree membership network and a Designated with Distinction Patient Centered Hospital

Founding member of the Value Care Alliance

Affiliated with the Yale School of Medicine and The Frank H. Netter MD School of Medicine at Quinnipiac University

Mission Statement:

- To provide personalized, humanistic, consumer-driven healthcare in a healing environment
- To empower individuals to be actively involved in decisions affecting their care and well-being through access to information and education
- To provide leadership to improve the health of the community served

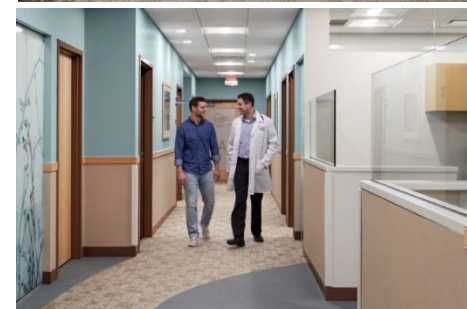


Griffin Hospital Services Offered

- **Griffin Bariatrics (bariatric surgery & support)**
- **Behavioral Health & Addiction Services**
- **The Center for Breast Wellness at Griffin Hospital**
- **The Center for Cancer Care at Griffin Hospital**
- **Cardiology Testing**
- **Cardiac Rehabilitation**
- **The Childbirth Center**
- **Chronic Disease Self-Management Programs**
- **Community Health Resource Center**
- **Dialysis Services**
- **The Digestive Disorders Center**
- **Emergency Medicine**
- **Internal/Primary Care Medicine (Griffin Faculty Physicians)**
- **Geriatric Assessment Center**
- **The Center for Imaging & Diagnostics at Ivy Brook**
- **Infusion Services**
- **Intensive Care**
- **The Joint Replacement Center**
- **Clinical Laboratory Testing**
- **Graduate Medical Education**
- **Medically Supervised Weight Loss Program**
- **Medical/Surgical Care**
- **Nuclear Medicine**
- **Nutrition Counseling & Related Services**
- **Occupational Medicine Center**
- **Valley Parish Nursing/Community Outreach Program**
- **Anatomic Pathology**
- **The Center for Pelvic Health**
- **The Center for Healthy Living**
- **The Prevention Research Center (Yale-Griffin PRC)**
- **Radiology, MRI, X-Ray, Ultrasound**
- **Rehabilitation & Physical Medicine**
- **Comprehensive Sleep Wellness Center**
- **Surgery (Inpatient & Outpatient)**
- **Comprehensive Wound Treatment Center**
- **The Griffin Health Teaching Kitchen**

Griffin Faculty Physicians

- Griffin Faculty Practice Plan, Inc. was established as a non-profit medical group practice in 1996 to allow the faculty of the Griffin Hospital Medical Education Program to provide patient care services and to bill and collect for those services. This Practice has grown and enhanced its capabilities to meet the services needs of the Hospital and the medical needs of the community it serves.
- The Practice was reorganized in 2018 as Griffin Faculty Physicians, Inc. It remains a non-profit medical group but is now a single-member corporation and subsidiary of Griffin Hospital under Connecticut's Foundation Model.
- The Practice has various locations throughout the Naugatuck Valley and employs over 70 medical care providers
- **Specialties include:**
 - **Primary Care:** Internal Medicine & Family Medicine
 - **Medicine Subspecialties:** Gastroenterology, Endocrinology, Pulmonology, Cardiology, Geriatrics.
 - **Surgical Specialties:** General Surgery, Breast Surgery, Cardiothoracic Surgery, Urology and OBGYN



Your Objectives for the Collaborative



- To assess patients for social needs and connect them with identified resource/s
- To provide a patient a point of contact or a long- term resource if and when needed
- The opportunity to track through a closed loop social referral system

Storyboard Summary



Needs in your community that your team would like to address:

- Social needs: housing, food, transportation, utility, personal safety

What populations will you prioritize serving:

- Patients who utilize Griffin Health for inpatient, outpatient, and emergency services

How do you collect information about the needs of your population:

- *Prapare Lite* and Community Health Worker assessment

Storyboard Summary continued

Who are important partners in your community:

- Community Action agencies, food pantries, transportation companies, behavioral health providers

Community-based organizations you are working with (or plan to work with) and resource gaps in your community:

- Griffin works closely with TEAM, a robust community action/anti-poverty agency
- Five local food banks
- Valley Transit District
- BHcare (Community Behavioral Health Clinic)

Gaps include:

- Transportation vendors outside Griffin region,
- Housing shortage/lack of options
- FQHC/Community clinics and food pantries not connected to Unite Us referral platform

Technology or data partners:

- Unite Us is our social referral platform
- Automated referrals from providers and inpatient case managers for the initial CHW assessment

Storyboard Summary continued



Key stakeholders or partners in your community that will influence the success of your SDOH initiatives (e.g., hospitals, health plans etc.):

- Griffin inpatient departments
- Griffin outpatient providers (specialists and primary care provider
- TEAM
- Food pantries
- Transportation vendors
- BH Care and Community Clinics

How will your SDOH initiatives be financed:

- Griffin Health has invested in a Community Health Worker to help drive this work and provide a main point of contact to manage SDOH referrals. The CHW role is critical to help make the SDOH initiative a success.